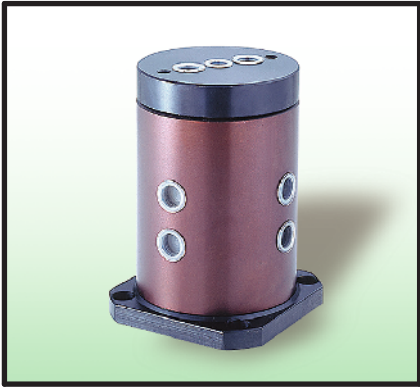
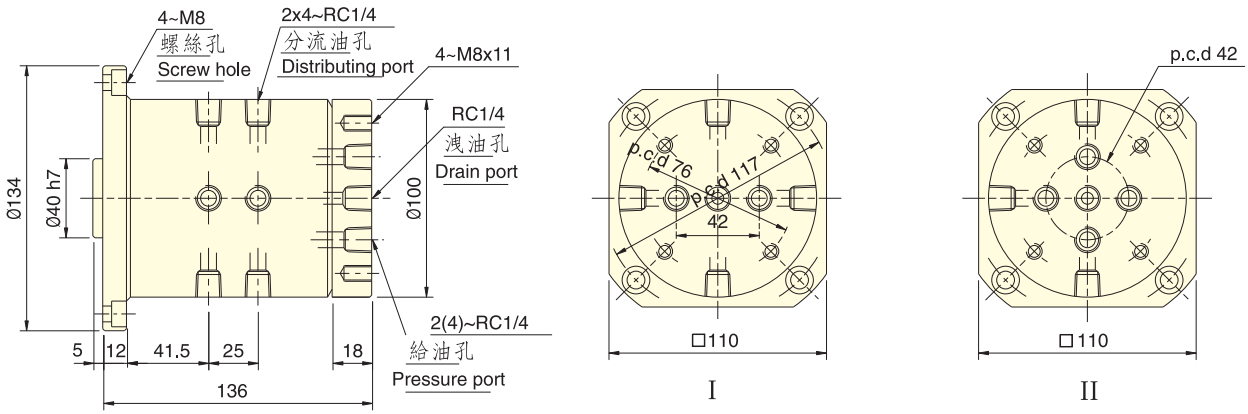


油壓迴轉分流閥

HYDRAULIC ROTARY VALVE



- 迴轉工作台上夾治具空油壓缸用迴轉分流閥。
- 迴轉閥內部經特殊設計，使得迴轉軸可輕力轉動，且不虞漏油。
- Rotary valve is used for clamping cylinder on rotary table.
- Through unique design, it can make the rotary housing be rotated light force, and is free from oil leaking.
- I 型為一迴路，同時控制開夾動作。
- II 型為二迴路，可分別控制開夾動作。
- I Type is a single circuit which controls the clamping.
- II Type is a double circuit which separately controls the clamping.
- RV 型式的洩油孔配管務必單獨接回油槽，以避免產生背壓。
- The drain port of RV type should be independently connected to oil tank to avoid back pressure.



保留規格修改的權利
Subject to technical changes.

型號 Model	RV-31H	分流數 Distributing	四向(可訂製) 4 (by order)
最高使用壓力 Max. pressure	40kgf/cm ² (4.0Mpa)	重量 Weight	7.4kgs