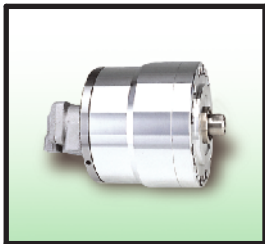


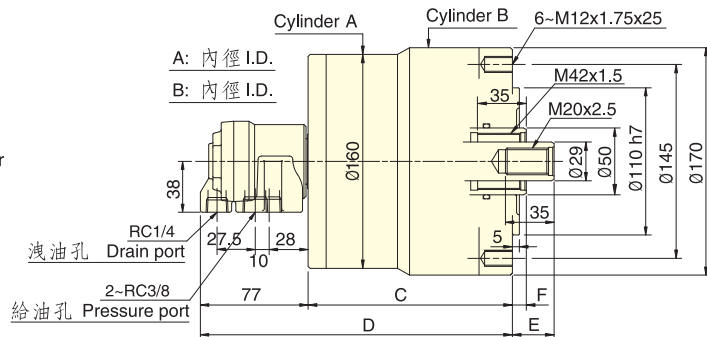
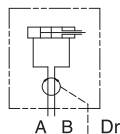
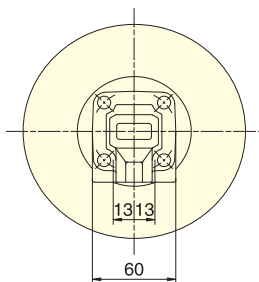
雙桿式迴轉油壓缸



DOUBLE ROD ROTATING CYLINDER



- 短型，輕量，雙桿型迴轉油壓缸。
- For short form, light weight, double rod rotary cylinder.
- 洩油孔配管務必單獨接回油壓槽，以避免產生背壓。
- The drain port should be independently connected to oil tank to avoid back pressure.



保留規格修改的權利
Subject to technical changes.

規格 Spec. 型號 Model	活塞面積 Eff. piston area cm ²		行程 mm Piston stroke		最高迴轉數 min ⁻¹ (r.p.m) Max. speed	最高使用壓力 MPa Max. pressure (kgf/cm ²)	I kg·m ² Moment of inertia	重量 kg Weight
	押側 Extend	拉側 Retract	A	B				
RD-120N	122.7	126.1	116.1	113.1	5000	3.0(30)	0.14	11.2
RD-125N								
寸法 Size 型號 Model	A	B	C	D	E		F	
					max.	min.	max.	min.
RD-120N	130	125	137	214	60	40	35	15
RD-125N			147	224	55	30		10