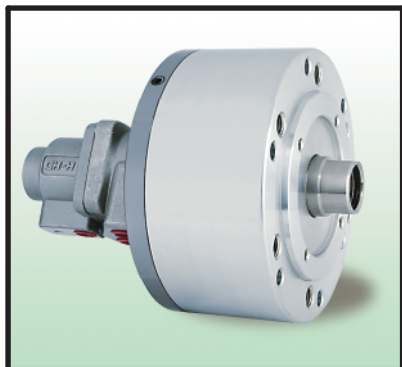


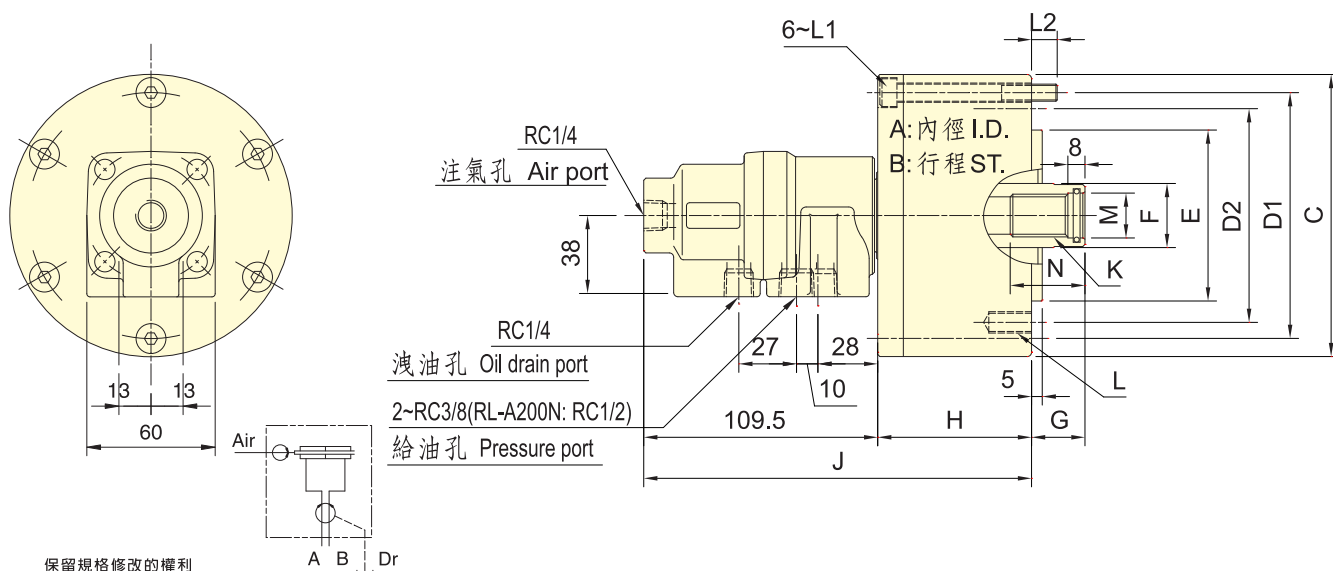
注氣型迴轉油壓缸



ROTATING HYDRAULIC CYLINDER WITH AIR CONNECTION



- 高速，注氣型迴轉油壓缸。可經由後端迴轉繼手供給空氣。
- 安裝時可由後端鎖固之。
- To allow compressed air to be feed from the rear end of the distributor through the rotating union.
- Can screw it from the rear end of the cylinder when mounting.
- 使用時，請混入微量的油霧。
- When used, a little oil mist should be contained.



保留規格修改的權利
Subject to technical changes.

規格 Spec. 型號 Model	活塞面積 Eff. piston area cm ²		行程 mm Piston stroke	最高迴轉數 min ⁻¹ (r.p.m) Max. speed	最高使用壓力 MPa Max. pressure (kgf/cm ²)	注氣部最高使用壓力 MPa Air connection Max. pressure (kgf/cm ²)	I kg·m ² Moment of inertia	重量 kg Weight
	押側 Extend	拉側 Retract						
RL-A75N	42.6	37.1	15	6000	4.0 (40)	0.8(8)	0.01	3.0
RL-A100N	77.0	71.5	20					
RL-A125N	121.2	113.1	25					
RL-A150N	175.2	160.8	30					
RL-A200N	312.5	290.4	35					

寸法 Size 型號 Model	A	B	C	D1	D2	E h7	F	G		H	J	K	L	L1	L2	M H8	N
								max.	min.								
RL-A75N	75	15	107	90		65	30	45	30	57	166	M20x2.5	6~M8x16	M8x60	12	21	35
RL-A100N	100	20	132	115	100	80				72	181		6~M10x20	M8x75			
RL-A125N	125	25	160	140	130	110	35	50	25	82	191	M24x3.0	6~M12x20	M8x85	16	32	45
RL-A150N	150	30	190	170		45	55	95		204	M30x3.5		12~M12x24	M10x100			
RL-A200N	200	35	245	220	145	120	55	70	35	115	225	M36x4.0	12~M16x30	M10x125	21	38	60