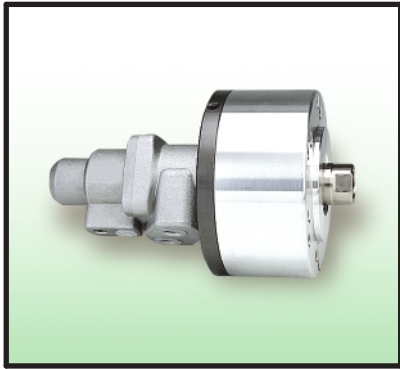


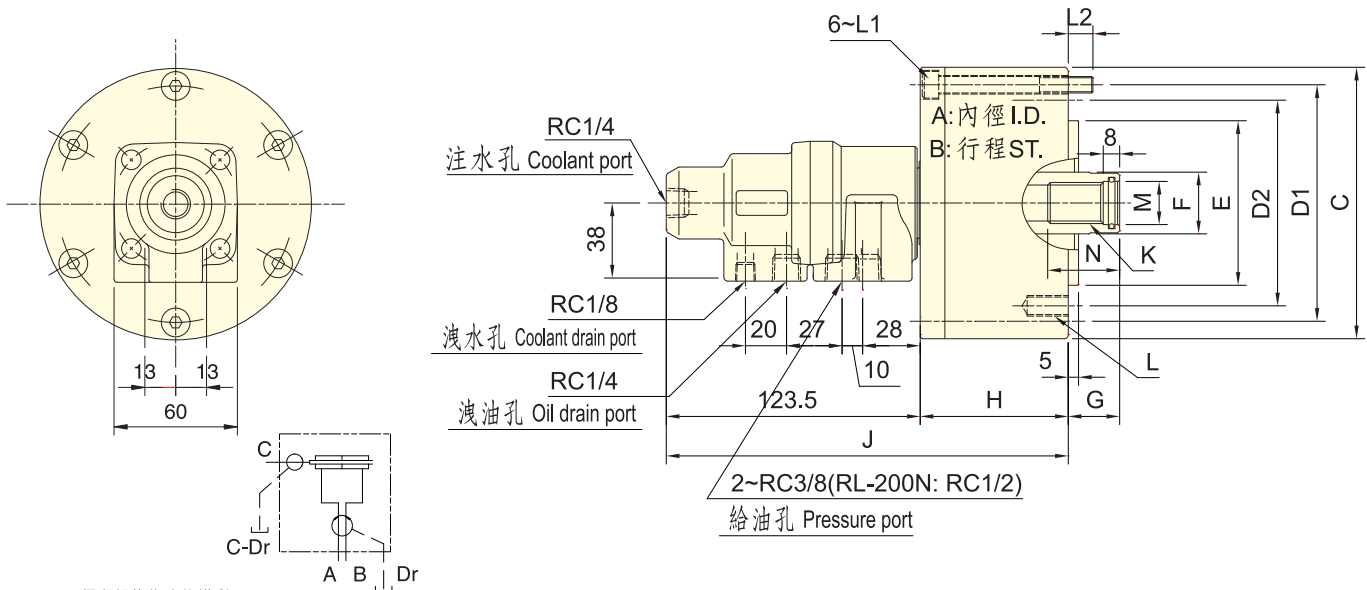
注水型迴轉油壓缸



ROTATING HYDRAULIC CYLINDER WITH COOLANT CONNECTION



- 高速, 注水型迴轉油壓缸. 可經由後端迴轉繼手供給切削水.
- 安裝時可由後端鎖固之.
- To allow coolant to be feed from the rear end of the distributor through the rotating union.
- Can screw it from the rear end of the cylinder when mounting.
- 洩油孔配管務必單獨接回油壓槽, 以避免產生背壓.
- The drain port should be independently connected to oil tank to avoid back pressure.



保留規格修改的權利
Subject to technical changes.

規格 Spec. 型號 Model	活塞面積 Eff. piston area cm ²		行程 mm Piston stroke	最高迴轉數 min ⁻¹ (r.p.m) Max. speed	最高使用壓力 MPa Max. pressure (kgf/cm ²)	注水部最高使用壓力 MPa Coolant connection Max. pressure (kgf/cm ²)	I kg·m ² Moment of inertia	重量 kg Weight
	押側 Extend	拉側 Retract						
RL-75N	42.6	37.1	15	6000	4.0 (40)	3.5(35)	0.01	3.0
RL-100N	77.0	71.5	20				0.04	4.5
RL-125N	121.2	113.1	25				0.06	7.0
RL-150N	175.2	160.8	30	5500			0.10	9.6
RL-200N	312.5	290.4	35				0.29	15.5

寸法 Size 型號 Model	A	B	C	D1	D2	E h7	F	G		H	J	K	L	L1	L2	M H8	N
								max.	min.								
RL-75N	75	15	107	90		65	30	45	30	57	180	M20x2.5	6~M8x16	M8x60	12	21	35
RL-100N	100	20	132	115	100	80				72	195		6~M10x20	M8x75			
RL-125N	125	25	160	140	130	110	35	50	25	82	205	M24x3.0	6~M12x20	M8x85	16	25	45
RL-150N	150	30	190	170			45	55	95	218	M30x3.5	12~M12x24	M10x100				
RL-200N	200	35	245	220	145	120	55	70	35	115	240	M36x4.0	12~M16x30	M10x125	21	38	60