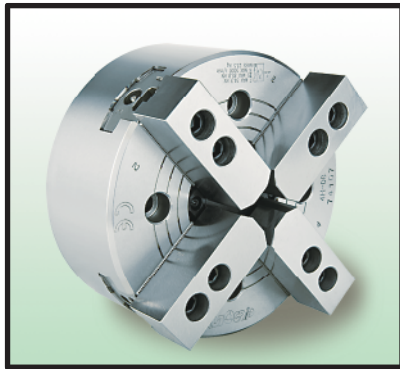


中空動力夾頭

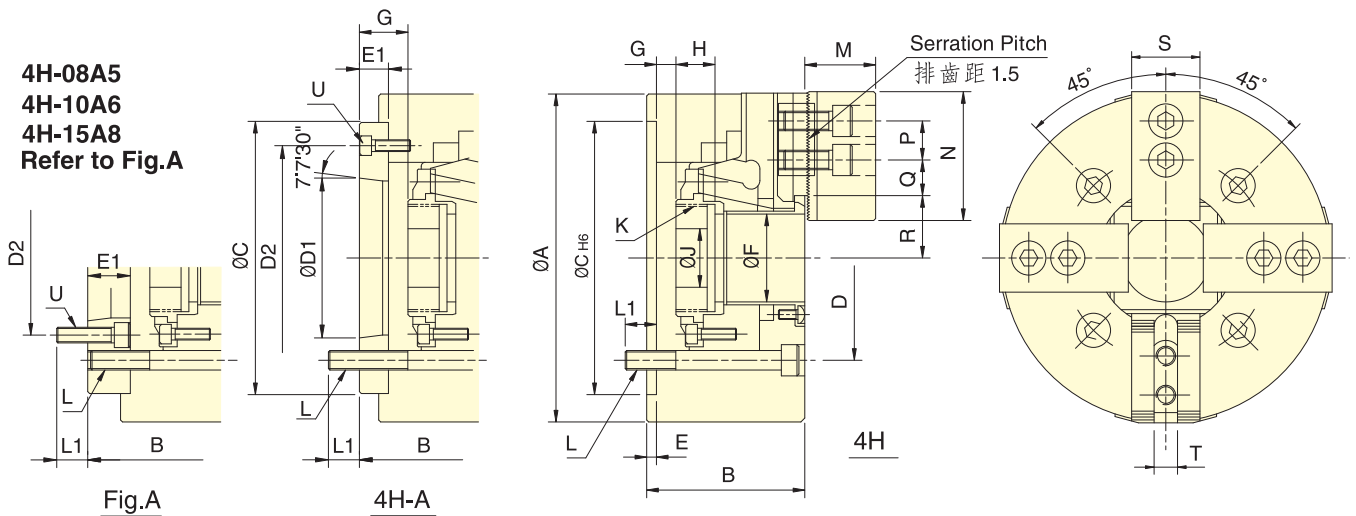


THROUGH-HOLE POWER CHUCK



- 楔形四爪大貫通孔徑，特別適合異形物的夾持。
- 摺動面均經硬化及精密研磨，並直接潤滑。
- 高剛性結構及高夾持精度。
- It's a WEDGE-HOOK type 4-jaw with the large through-hole.
- Matching surfaces of all parts hardened, ground and lubricated directly.
- Construction of high rigidity and high clamping accuracy.
- J值為連結螺帽未車製螺牙時的孔徑。Kmax值為連結螺帽可車製螺牙之最大規格，但可依實際需求訂製。
- J value is the hole diameter of blank draw nut, K is the maximum thread specification, and it could be customize.

4H-08A5
4H-10A6
4H-15A8
Refer to Fig.A



保留規格修改的權利
Subject to technical changes.

註：紅色數據為4H-A型之寸法。

The dimensions and the specifications of 4H-A type are in the red data.

規格 型號	Spec. Model	根心行程mm Plunger stroke	爪行程(直徑)mm Jaw stroke(Dia.)	夾持直徑 Chuck Dia.mm 最大 Max. 最小 Min.	容許油壓缸推力kN(kgf) Max. D.B. pull	最大夾持力 kN(kgf) Max. clamping force	最高迴轉數min ⁻¹ (r.p.m) Max. speed	I kg·m ²	重量 kg Weight	通用迴轉缸 Matching cyl.	最大使用壓力 Max. pressure Mpa (kgf/cm ²)		
4H-06	A5	12	5.5	168	15	21.6(2200)	56.8(5800)	5000	0.07	12.5	14.3	TH-646	2.8(28)
4H-08	A5	16	7.4	210	13	34.3(3500)	85.8(8750)	4200	0.19	23.5	25.4	TH-852	2.8(28)
	A6										24.3		
4H-10	A6	19	8.8	254	31	42.6(4380)	110.7(11300)	3400	0.34	36.3	41	TH-1075	2.7(27)
	A8										39.3		
4H-12	A8	23	10.6	304	34	54.9(5600)	143.6(14650)	2700	0.79	62	65.7	TH-1291	2.7(27)
				381	50						71 (7250)		
4H-15	A8	23	10.6	381	50	71 (7250)	179.8(18350)	2000	2.42	123.7	130.7	TH-1512	2.4(24)
	A11										184		
4H-18	A11	450						1700	4.85	170	184		

寸法 型號	Size Model	A	B	C	D	D1	D2	E	E1	F	G max.	G min.	H	J		
4H-06	A5	168	81	91	140	104.8	82.56	116	15	45	11	26	-1	14	19	20
4H-08	A5	210	91	109	170	133.4										
	A6			103			150	17	31.5	15.5						
4H-10	A6	254	100	120	220	171.4	106.38	133.4	25	75	8.5	33.5	-10.5	14.5	25	45
	A8			113												
4H-12	A8	304	110	122			139.72	190	18	91	8	26	-15	3	28	50
4H-15	A8	381	133	160	300	235	196.87	260	33	120	11	44	-12	21	39	60
	A11															

寸法 型號	Size Model	K max.	L	L1	M	N	P	Q max.	Q min.	R max.	R min.	S	T	U	
4H-06	A5	M55x2	4~M10	16	16	37	73	20	22.8	9.3	32	29.3	31	12	3-M6
4H-08	A5	M60x2	4~M12	20	17	38	95	25	29.8	14.8	38.7	35	35	14	6-M10
	A6			18	3-M6										
4H-10	A6	M85x2	4~M16	22	24	43	110	30	33.8	14.3	51	46.6	40	16	6-M12
	A8			24	3-M8										
4H-12	A8	M100x2		23	25	51	130		45.8	15.8	61.3	56	50	21	
4H-15	A8	M130x2	4~M20	30	24	63	165	43	47.3	18.2	80	74.7	62	25.5 or 22	6-M16
	A11				28										3-M10
4H-18	A11								79.2						