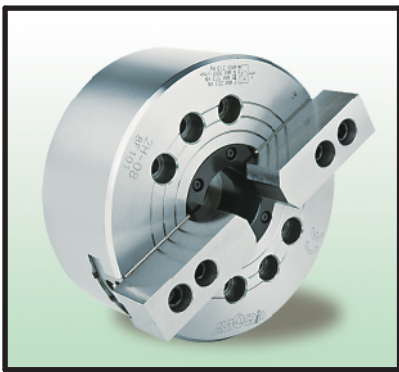


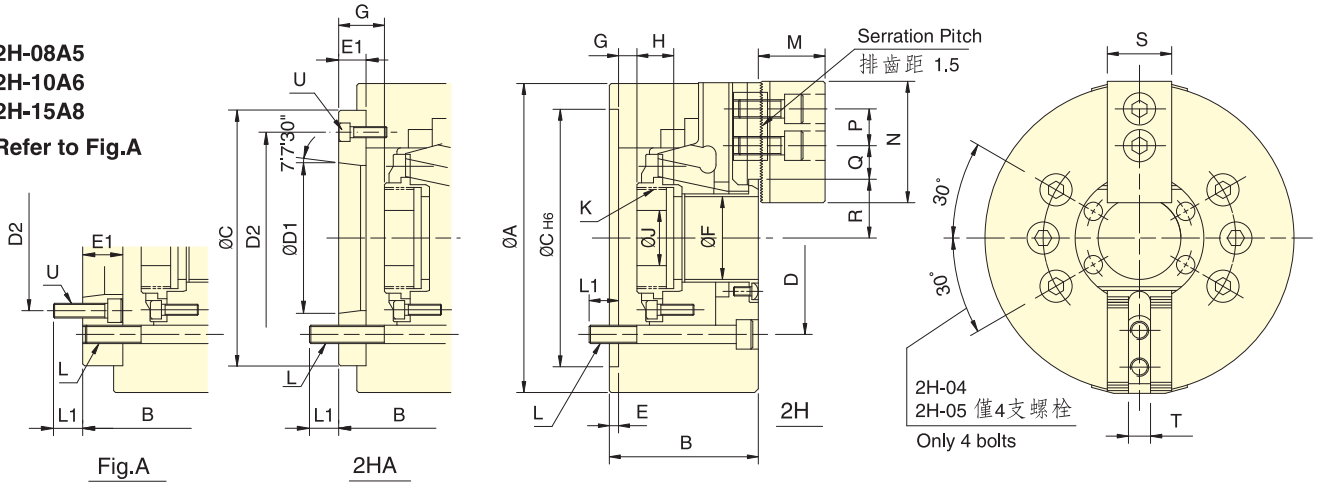
中空動力夾頭

THROUGH-HOLE POWER CHUCK



- 楔形二爪大貫通孔徑，特別適合異形物的夾持。
- 摺動面均經硬化及精密研磨，並直接潤滑。
- 高剛性結構及高夾持精度。
- It's a WEDGE-HOOK type 2-jaw with the large through-hole.
- Matching surfaces of all parts hardened, ground and lubricated direct
- Construction of high rigidity and high clamping accuracy.
- J值為連結螺帽未車製螺牙時的孔徑。Kmax值為連結螺帽可車製螺牙之最大規格，但可依實際需求訂製。
- J value is the hole diameter of blank draw nut, K is the maximum thread specification, and it could be customize.

2H-08A5
2H-10A6
2H-15A8
Refer to Fig.A



保留規格修改的權利
Subject to technical changes.

註：紅色數據為2H-A型之寸法。

The dimensions and the specifications of 2H-A type are in the red data.

規格 Spec. 型號 Model	楔行程 mm Plunger stroke	爪行程(直徑)mm Jaw stroke(Dia.)	夾持直徑 Chucking Dia.mm 最大 Max. 最小 Min.	容許油壓缸推力 kN(kgf) Max. D.B. pull	最大夾持力 kN(kgf) Max. clamping force	最高迴轉數 min ⁻¹ (r.p.m) Max. speed	I kg·m ²	重量 kg Weight	通用迴轉缸 Matching cyl.	最大使用壓力 Max. pressure Mpa (kgf/cm ²)
2H-04	10	5.4	110 7	9.2(940)	18.9(1930)	8000	0.01	3.8	TH-536	1.6(16)
2H-05	A4	10	135 12	11.7(1190)	23.9(2440)	7000	0.02	6.5	7.3	2.0(20)
2H-06	A5	12	168 15	14.4(1470)	37.9(3870)	6000	0.06	11.5	13.3	1.9(19)
2H-08	A5 A6	16	210 13	23.1(2360)	57.2(5840)	5000	0.17	21.3	24.2 22.4	1.9(19)
2H-10	A6 A8	19	254 31	28.4(2900)	73.9(7540)	4200	0.31	33.5	40.5 39	1.8(18)
2H-12	A8	23	304 34	36.7(3740)	95.8(9780)	3300	0.70	59.7	62.7	1.8(18)
2H-15	A8 A11	23	381 50	46.9 (4790)	119.6(12200)	2500	2.42 2.34	115	129 122	1.7(17)

寸法 Size 型號 Model	A	B	C	D	D1	D2	E	E1	F	G max.	G min.	H	J	
2H-04	110	59	85	70.6	-	-	4	-	26	3.5	-6.5	17.5	12	
2H-05	A4	135	60	71	110	82.6	4	15	33	1	16	-9	6	20
2H-06	A5	168	81	91	140	104.8	4	23	45	11	26	-1	14	19
2H-08	A5 A6	210	91	109 103	170	133.4	5	17 17	52	14.5	37.5 31.5	-1.5	21.5 15.5	20.5
2H-10	A6 A8	254	100	120 113	220	171.4	5	25 18	75	8.5	33.5 26.5	-10.5	14.5 7.5	25
2H-12	A8	304	110	122	230	190	6	18	91	8	26	-15	3	28
2H-15	A8 A11	381	133	160 149	300	235	6	33 22	120	11	44 33	-12	21 10	39

寸法 Size 型號 Model	K max.	L	L1	M	N	P	Q max.	Q min.	R max.	R min.	S	T	U
2H-04	M32x1.5	4~M10	16	24	52	14	11.3	6.8	23	20.3	25	10	-
2H-05	A4 M40x1.5	4~M10	15	15	31	62	19.8	7.8	26.5	23.8	25	10	3~M6
2H-06	A5 M55x2	6~M10	16	16	37	73	22.8	9.3	32	29.3	31	12	6~M10
2H-08	A5 A6 M60x2	6~M12	20	17	38	95	29.8	14.8	38.7	35	35	14	3~M6 6~M12
2H-10	A6 A8 M85x2	6~M16	22	18	43	110	33.8	14.3	51	46.6	40	16	3~M8 6~M12
2H-12	A8 M100x2	6~M16	23	24	51	130	45.8	15.8	61.3	56	50	21	3~M8 6~M12
2H-15	A8 A11 M130x2	6~M20	30	25	63	165	47.3	18.2	80	74.7	62	25.5 or 22	6~M16 3~M10